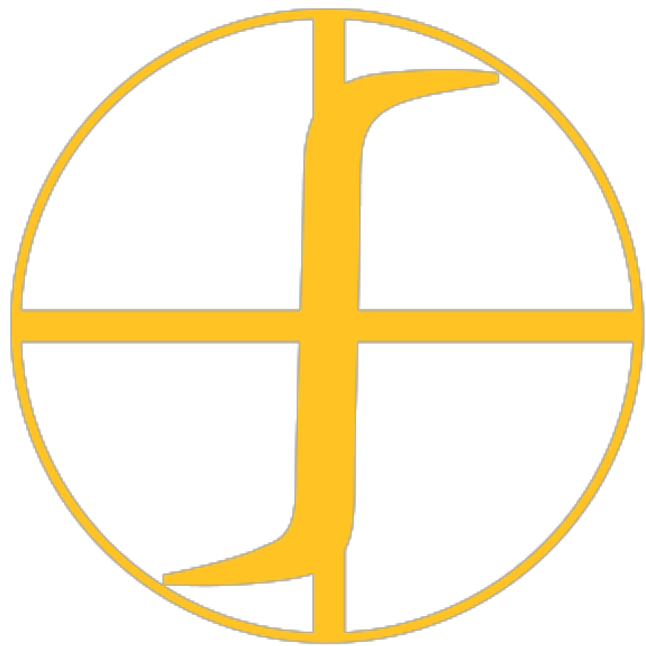




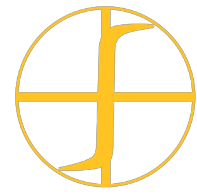
Advanced Induction Materials and Technology



A D V A N C I N G I N D U C T I O N T E C H N O L O G Y

We are Fluxtrol

A world leader in induction heating solutions
since 1981.

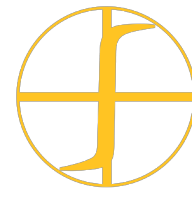


Our Mission

To provide superior
electromagnetic induction
technologies, products and
services that implement
successful induction
solutions

[LEARN MORE](#)

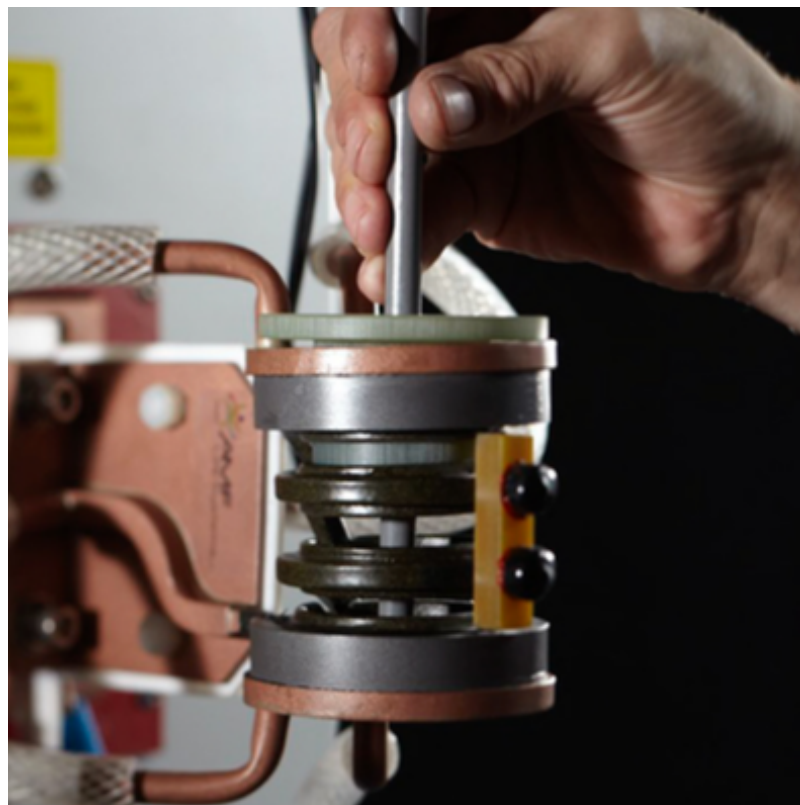




W H A T W E D O

Value Driven Induction Technologies

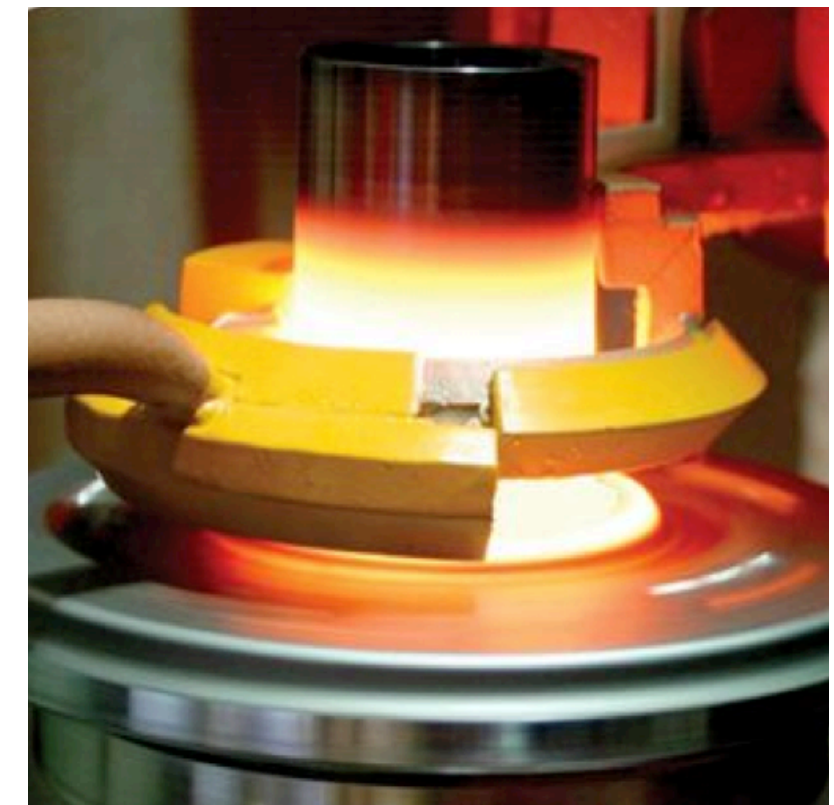
Fluxtrol Inc. has not only been advancing induction technologies for almost four decades, but also has become a world leader in the manufacture and supply of soft magnetic composites (SMC). Additionally, we provide a wide range of electromagnetic induction technology solutions to a multitude of global industries.



Research & Development



SMC Material



Engineering Services



W O R L D C L A S S

Magnetic Flux Control for Variety of Applications

Fluxtrol is actively working not only in traditional induction heating areas such as heat treating, joining, and melting, but also in many other specialty areas ranging from antennas to biomedical.

HEATING TREATING

Hardening
Tempering
Annealing
Stress Control

SURFACE ENGINEERING

Curing
Plasma Coating
Hard Facing
PVD CVD

JOINING

Brazing Soldering
Welding
Sealing
Adhesive Bonding

MELT & MASS HEATING

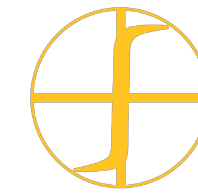
Melting
Forging
Forming
Cold Crucible Melting



Striving for Perfection

SPECIAL APPLICATIONS

Crystal Growth
NMR Antennas
Biomedical
Inductive Power Transfer



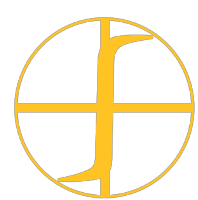
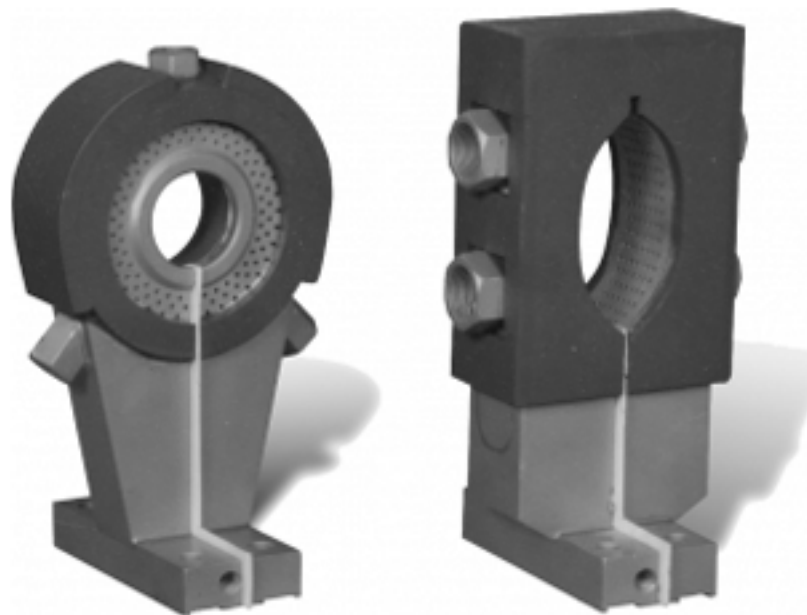
C O M M I T T E D

Trusted by Every Industry Around the World

Our engineering and research team along with the combined efforts of our customers' specialists has brought forth a wide variety of innovative solutions being used in thousands of applications ranging from automotive, alternative energy, aerospace, oil and gas, special metallurgy, biomedical, the food industry, and many more.

WATCH VIDEO





S M C F O R A L L I N D U C T I O N C O I L S T Y L E S & S I Z E S

Fluxtrol Soft Magnetic Composite (SMC)

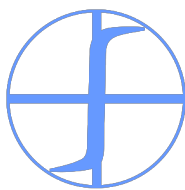

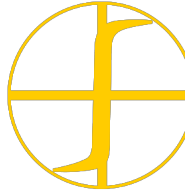
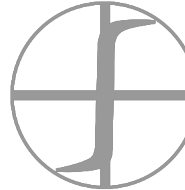

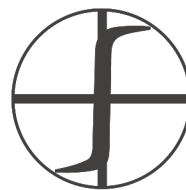
Fluxtrol Inc. is the world leader in magnetic flux control in induction heating systems and other applications. Fluxtrol does research, develops and manufactures magnetic flux controllers using propriety soft magnetic composites (a.k.a. MagnetoDielectric Materials) produced in both machinable and moldable (formable) varieties. The properties and characteristics of these materials allow for effective use in a wide range of applications with frequencies from 50 Hz to 13.56 MHz. Fluxtrol, Inc. welcomes collaboration with customers and research groups for the advancement of new ideas and special applications.

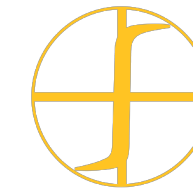




F L E X I B I L I T Y

Properties of Magnetic Field Concentrators

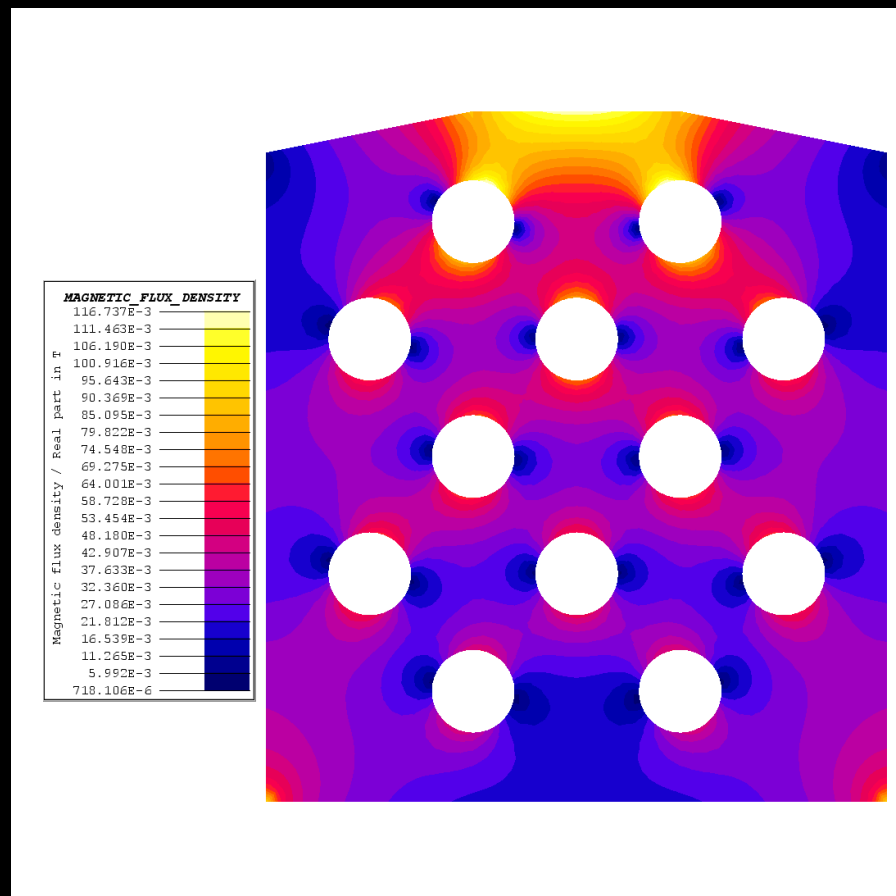
		Machinable				Formable	
Properties	Units	Fluxtrol 100	Fluxtrol A	Fluxtrol 50	Ferrotron 559H	Alphaform LF	Alphform MF
Product Identifier Color							
Density ($\pm 2\%$)	g/cm ³	6.8	6.6	6.1	5.9	4.1	4.0
Operating Frequency Range	kHz	Up to 50	Up to 50	10-1000	10-3000	1-80	10-1000
Maximum Relative Permeability	None	130	120	55	18	13	10
Saturation Flux Density	T	1.7	1.6	1.5	1.0	1.0	0.9
Temperature Resistance	°C	225 Long Term 300 Short Term	250 Long Term 300 Short Term	250 Long Term 300 Short Term	250 Long Term 300 Short Term	225 Long Term 300 Short Term	225 Long Term 300 Short Term
Thermal Conductivity	W/cm-°C	0.23	0.20	0.06	0.04	0.02	0.02
Resistivity	kΩcm	12.5	0.5	0.5	>15	>15	>15



P R O F E S S I O N A L

Research & Development

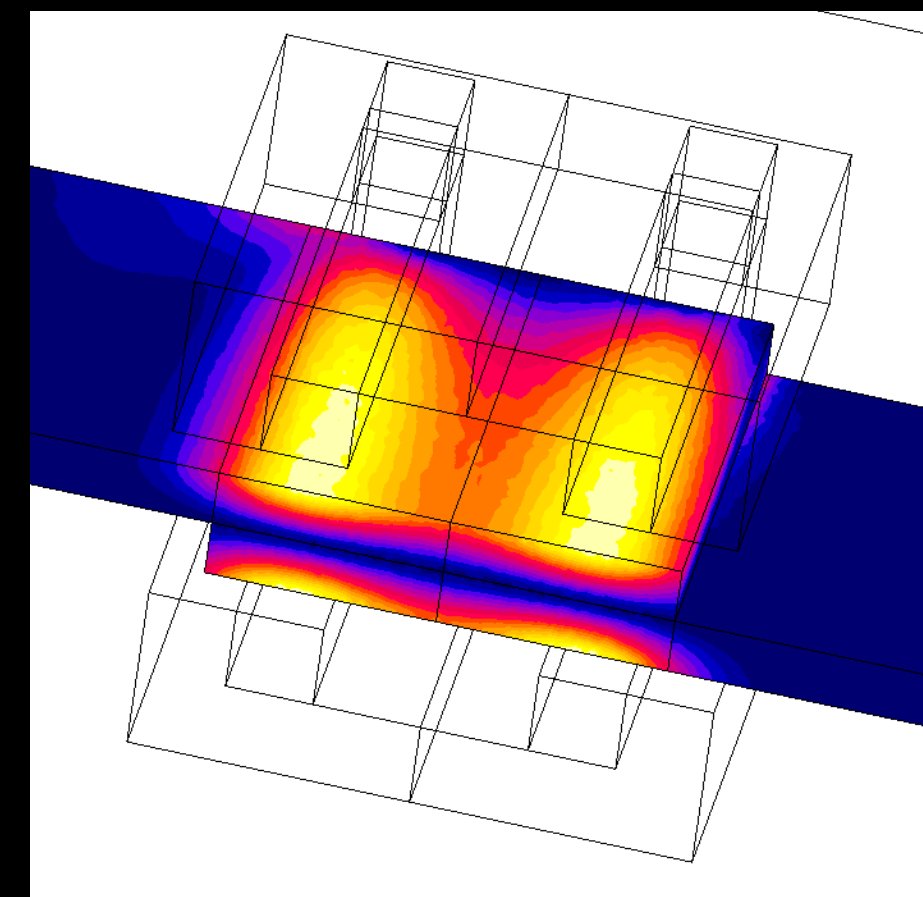
Research and development is one of the core competencies of Fluxtrol, Inc. The three cornerstones of our R&D are the control of magnetic fields, fundamental understanding of induction technique, and computer modeling and process optimization.



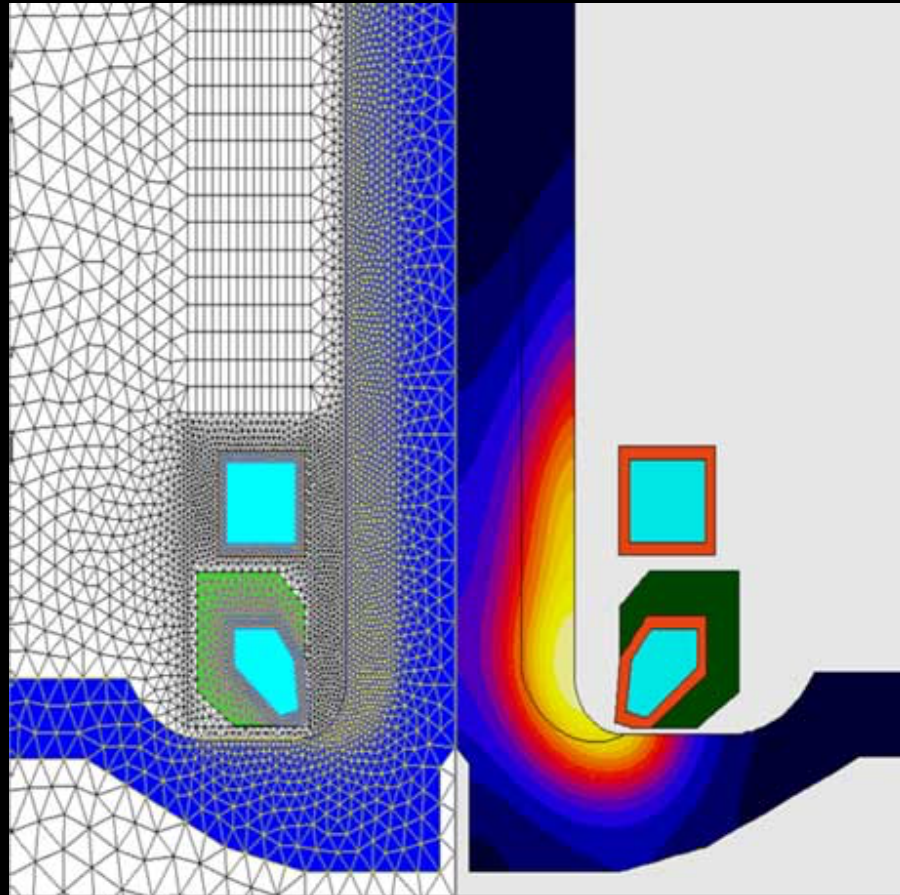
Magnetic Flux Control



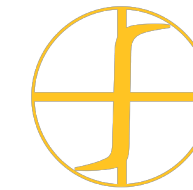
Emerging Technologies



Modeling and Optimization



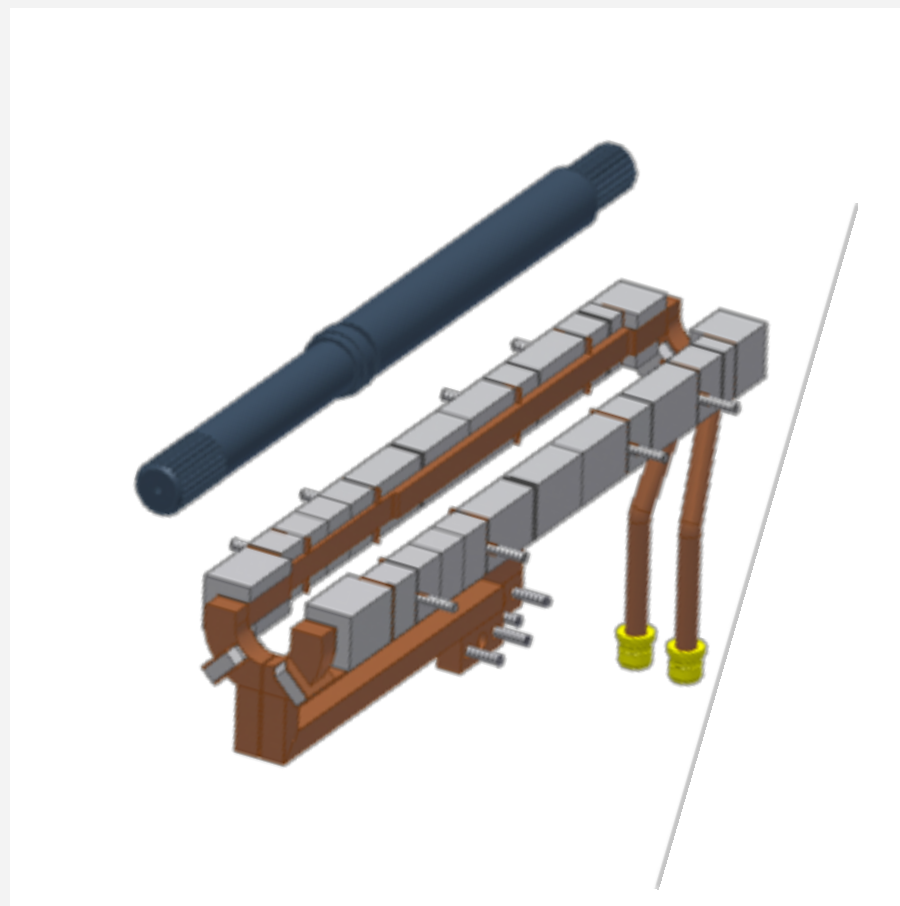
Finite Element Analysis - Simulation



P R O F E S S I O N A L

Engineering Services

We provide a wide range of engineering services; computer simulation, optimal design of induction coils and related processes, prototyping and validation, on-site set-up, operating training, and on-going technical support.



Induction Coil Design



Prototype & Validation



SPECIALIZED

Team Leaders



Riccardo Ruffini
CEO



Robert Ruffini
President



Robert Goldstein
Director of Engineering



Mitch Madeira
Operations Coordinator



Prem Vaishnava Ph.D.
Chief Materials Engineer



Tony Edwards
Director of Sales



Ricardo Diaz
Regional Sales Manager



Carrie Whitaker
Customer Service Manager



Carol Wickerham
Controller

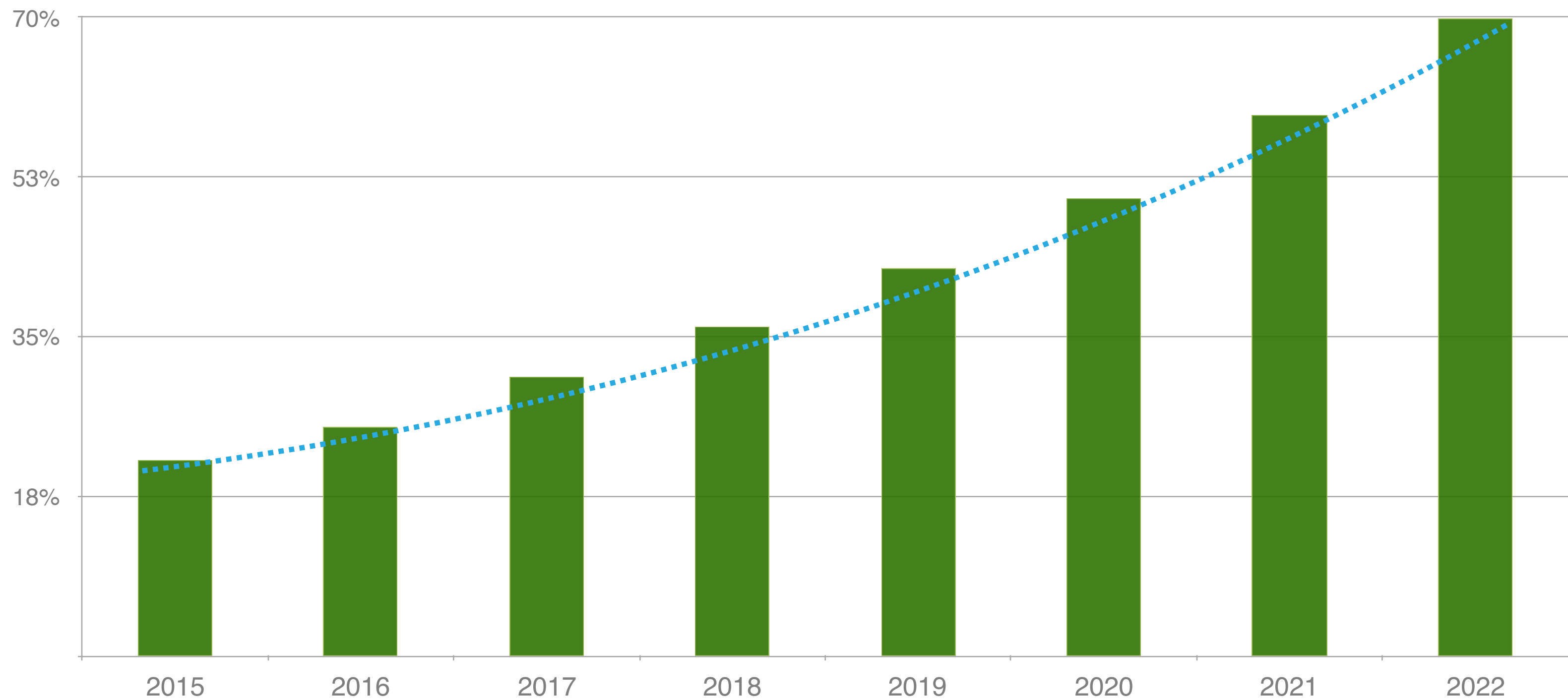


Doug Whittaker
Production Manager



C O N S I S T A N T

Annual Sales Growth





CENTRE FOR INDUCTION TECHNOLOGY

Fluxtrol.com Website & Links

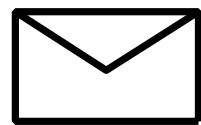
Our updated website, www.fluxtrol.com, is your portal to discover more about Fluxtrol, Inc. and to engage our friendly and helpful staff.

Fluxtrol.com offers training on the basics of induction heating, product selection assistance, and even real time access to news about Fluxtrol's products and services.



TELEPHONE

[1-248-393-2000](tel:1-248-393-2000)



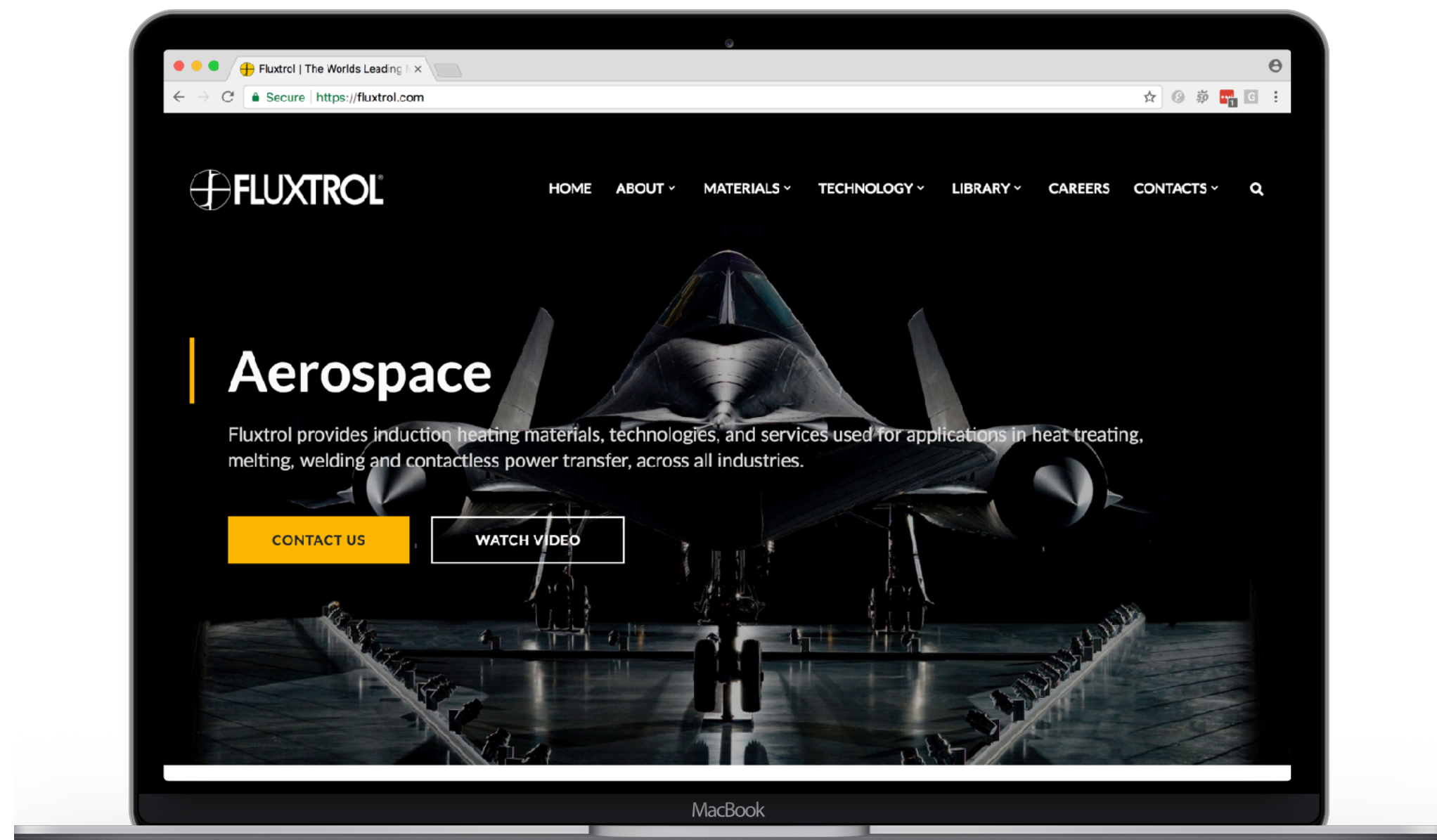
EMAIL HERE

sales@fluxtrol.com



WATCH HERE

<https://www.youtube.com/user/Fluxtrol>



<https://fluxtrol.com>



LINKEDIN

<https://www.linkedin.com/company/fluxtrol/>



FACEBOOK

<https://www.facebook.com/Fluxtrol/>



TWITTER

<http://twitter.com/fluxtrol>



